

 **ROOF**ANTENNA




Installation Instructions

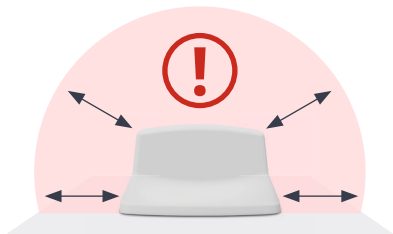
Installation Instructions

Recommended distances for the **ROOF ANTENNA** to the roof rails, roof windows, satellite antenna and PV system.

Recommended distances

- Roof rails
- Awning
- Aluminum profiles
- Skylight
- Ventilation cover

 **at least 50 cm**

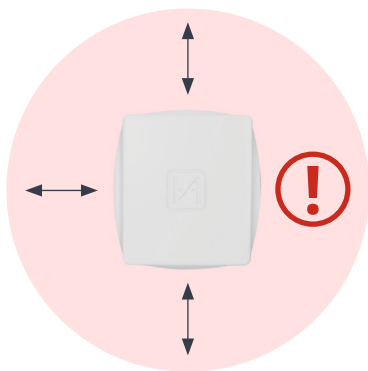


- SAT Antennas
- FM/DAB antennas
- DVB-T antennas

 **at least 50 cm /
recommended 75 cm**

- PV and solar system
- Storage box
(metal or plastic)

 **at least 75 cm /
recommended 100 cm**



Installation on the Roof

The **ROOF ANTENNA** from the **CAMPERNET** set is intended for installation on the roof of a motorhome, panel van or caravan.

The installation and installation space instructions apply to both variants, whether with a side cable exit or with the antenna cables exit vertically downwards. For good reception, the **ROOF ANTENNA** must be placed as high as possible above the ground.



Mounted on the roof, as high as possible above the ground.



Do not install under the ceiling of the motorhome or caravan.



Do not install on the side, front or back wall.

Metal, Plastic, Wood

Due to the unique antenna structure, the **ROOF** ANTENNA from the **CAMPERNET** set works on any surface described here. A metal plate under the **ROOF** ANTENNA is not necessary.

Application examples:

- Travel trailer
- Integrated motorhomes
- Semi-integrated motorhomes
- Box vans
- GRP roof



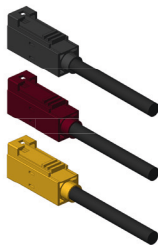
The installation of the **ROOF** ANTENNA is possible on all surfaces. No matter whether it is plastic/GRP, foam material like PU, EPS, XPS, wood or metal.

Antenna Cables

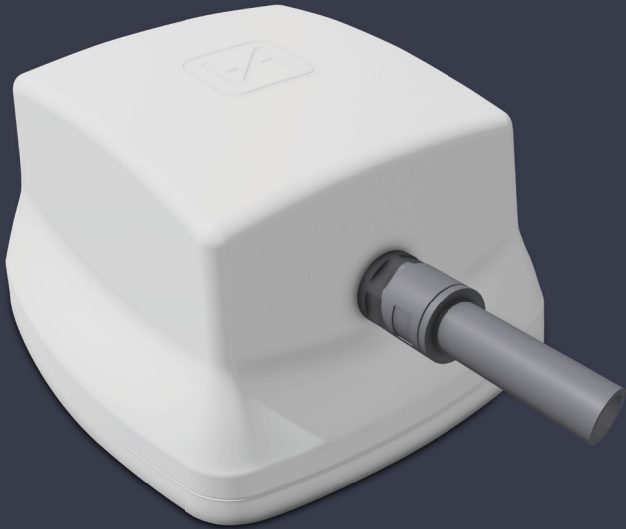
Code A, colour black / 5G diversity

Code D, colour bordeaux / LTE + 5G

Code K, colour curry / WLAN 2.4 GHz, 5 GHz, 6 GHz



Extension of the antenna cable max. 5 m
Recommended cable type for extension: Leoni Dacar 302



Installation Instructions

Cable ducting sideways

ROOF ANTENNA – cable ducting sideways



1. Clean roof surface

Clean the mounting area of the motorhome or caravan with a dirt and grease-dissolving cleaner until the surface is clean. Do not use acid! Let the surface dry! Applies to metal and GRP roofs. **For an appropriate cleaner, please contact your vehicle's manufacturer!**



2. Clean adhesive surface

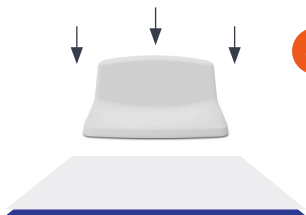
Clean the adhesive surface of the **ROOF ANTENNA** with a dirt and grease-dissolving cleaner. No acid! Let the surface dry!



3. Glue bead

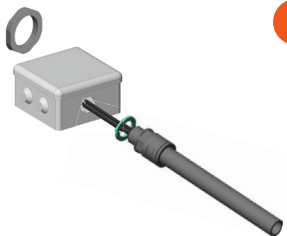
Apply two closed beads of adhesive to the underside of the **ROOF ANTENNA**. Excess glue collects in the circumferential groove.

ROOF ANTENNA – cable ducting sideways



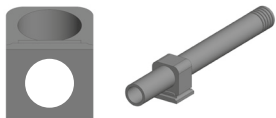
4. Place the antenna correctly

Place the **ROOF ANTENNA** with mounting adhesive on the roof and press firmly until the adhesive is evenly distributed. Applies to metal and GRP roofs.



5. Screw connection

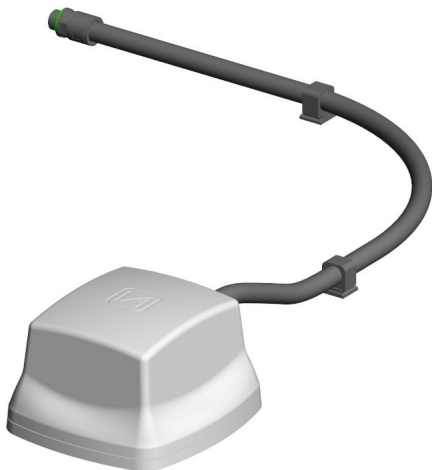
Push the seal onto the screw connection. Thread the antenna cable through the roof duct. From the inside of the roof duct, secure the screw connection with the enclosed screw nut. Screw connection M20 / PG13.5



6. Hose holder

Apply assembly adhesive to the underside of the hose holder and press it onto the roof of the motorhome or caravan and wait until it has hardened.

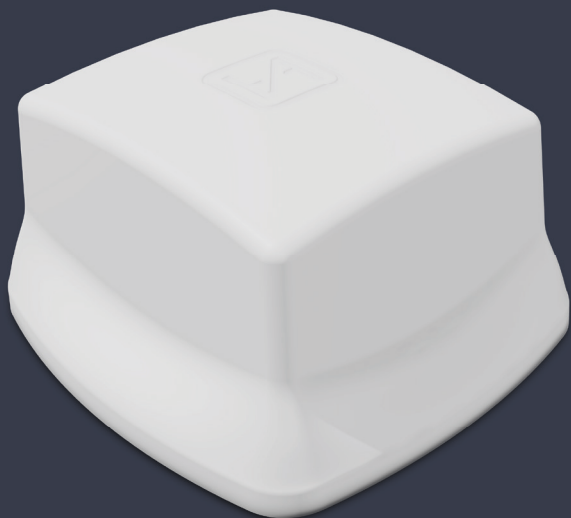
ROOF ANTENNA – cable ducting sideways



7.

Attach protective hose

Press the protective hose with the antenna cables into the hose holder and clip the lock onto it - now the installation is complete!!

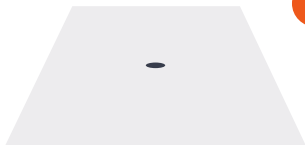


Installation Instructions

cable ducting central

ROOF ANTENNA – cable ducting central

! Mounting on sheet metal



1. ROOF ANTENNA -hole pattern-

ROOF ANTENNA with cable routing vertically downwards.
Drill diameter 24 mm.
Contact a specialist workshop!



2. Clean roof surface

Clean the mounting area of the motorhome or caravan with a dirt and grease-dissolving cleaner until the surface is clean. Do not use acid! Let the surface dry!
For an appropriate cleaner, please contact your vehicle's manufacturer!



3. Clean adhesive surface

Clean the adhesive surface of the **ROOF ANTENNA** with a dirt and grease-dissolving cleaner. Do not use acid!
Let the surface dry!

ROOF ANTENNA - cable ducting central

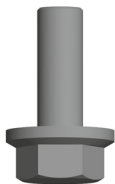
! Mounting on sheet metal



4. Glue bead

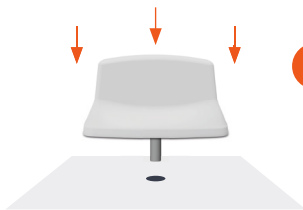
Apply two closed beads of adhesive to the underside of the **ROOF ANTENNA**. Excess glue collects in the circumferential groove.

We recommend DEKALIN's or Sikaflex's assembly adhesives.



5. Screw

A screw for sheet metal roofs is included to attach the **ROOF ANTENNA** until the mounting adhesive has hardened. It is screwed into **ROOF ANTENNA's** brass sleeve.



6. Place the antenna correctly

Thread the antenna cable through the hole in the roof. Place the antenna with mounting adhesive on the roof and press it firmly until the adhesive is evenly distributed.

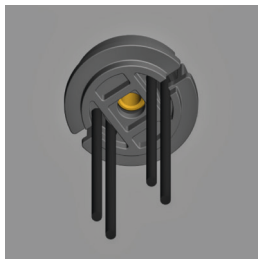
ROOF ANTENNA – cable ducting central

! Mounting on sheet metal



7. Attach the clamping piece

Push the antenna cables individually through the side grooves and snap them into the slots.



8. Press the clamping piece

Press the clamping piece into the roof opening. It provides abrasion protection for antenna cables.

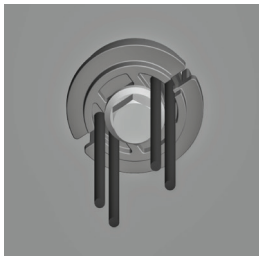


9. Screw

For sheet metal roofs, screw the enclosed screw from below through the clamping piece into the brass sleeve of the antenna and tighten it by hand (max. torque: 1 Nm).

ROOF ANTENNA - cable ducting central

⚠ Mounting on sheet metal

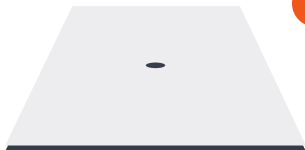


10. Completion of assembly

When further laying the antenna cable, the bending radius must **not be less than 15 mm**. Otherwise this will result in permanent damage to the antenna cables and a deterioration in the antenna range!

ROOF ANTENNA – cable ducting central

⚠ Assembly on multilayer

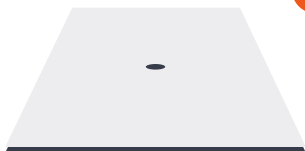


1.

ROOF ANTENNA -hole pattern-

ROOF ANTENNA with cable routing in the center, vertically downwards. Drill diameter 24 mm.

Contact a specialist workshop!



2.

Clean roof surface

Clean the mounting area of the motorhome or caravan with a dirt and grease-dissolving cleaner until the surface is clean. Do not use acid! Let the surface dry!

For an appropriate cleaner, please contact the vehicle's manufacturer!



3.

Clean adhesive surface

Clean the adhesive surface of the **ROOF ANTENNA** with a dirt and grease-dissolving cleaner. Do not use acid!

Let the surface dry!

ROOF ANTENNA - cable ducting central

⚠ Assembly on multilayer



4.

Glue bead

Apply two closed beads of adhesive to the underside of the **ROOF ANTENNA**. Excess glue collects in the circumferential groove.

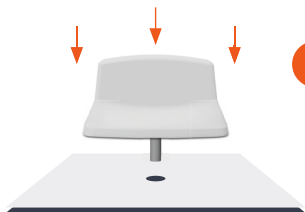
We recommend DEKALIN's or Sikaflex's assembly adhesives.



5.

Screw in the threaded rod

Screw the threaded rod with the short threaded piece into the brass sleeve of the **ROOF ANTENNA** as far as it will go.



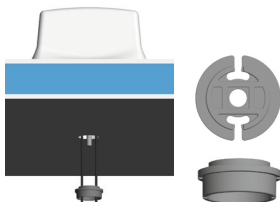
6.

Place the antenna correctly

Thread the antenna cable through the hole in the roof, as well as the open end of the threaded rod. Place the antenna with mounting adhesive on the roof and press firmly until the adhesive is evenly distributed.

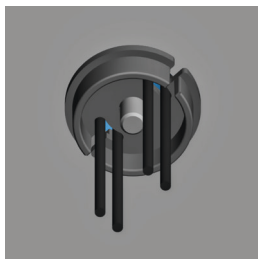
ROOF ANTENNA – cable ducting central

! Assembly on multilayer



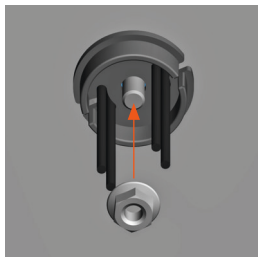
7. Attach the clamping piece

Push the antenna cables individually through the side grooves and snap them into the slots.



8. Press the clamping piece

Press the clamping piece into the roof opening. It provides abrasion protection for antenna cables.

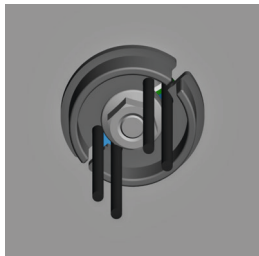


9. Screw nut

Screw the screw-nut onto the threaded rod and tighten them by hand (max. torque: 1 Nm).

ROOF ANTENNA - cable ducting central

⚠ Assembly on multilayer



10. Completion of assembly

When further laying the antenna cable, the bending radius must not be **less than 15 mm**. Otherwise this will result in permanent damage to the antenna cables and a deterioration in the antenna range!

Electronics

Mobile frequencies 698 MHz to 960 MHz, 1424 MHz to 2170 MHz, 2490 MHz to 2690 MHz, 3200 MHz to 3900 MHz

Cellular MIMO 2x2

Mobile antenna gain max. 5 dBi

WiFi frequencies 2300 MHz to 2490 MHz, 5.15 GHz to 5.825 GHz, 5.925 GHz up to 6.425 GHz

WiFi bands 1 to 14, 36 to 64, 100 to 140, 149 to 165

WiFi MIMO 2x2

WiFi antenna gain max. 5 dBi

Transmission power max. 2 W

Antenna type Passive Antenna

Mechanics

Dimensions 173 x 161 x 98 mm³ (L x W x H)

Protective hose 1500 mm (S)

Antenna cable 3000 mm (K)

Mobile radio connection 2x FAKRA socket Code D Bordeaux

WiFi radio connection 2x FAKRA socket Code K Curry

Weight 600 g

Temperature range -40 °C to +85 °C

Humidity 10 % to 90 % without condensate

Protection class IP68 (when installed)

Cable entry M20 / PG13.5

Special feature no electrically conductive ground surface necessary

Fastening UV-resistant assembly adhesive e.g. Sikaex, Dekalin (not included in the delivery)

WEEE NO.: DE 50397397



Electronics

Mobile frequencies 698 MHz to 960 MHz, 1424 MHz to 2170 MHz, 2490 MHz to 2690 MHz, 3200 MHz to 3900 MHz

Cellular MIMO 2x2

Mobile antenna gain max. 5 dBi

WiFi frequencies 2300 MHz to 2490 MHz, 5.15 GHz to 5.825 GHz, 5.925 GHz up to 6.425 GHz

WiFi bands 1 to 14, 36 to 64, 100 to 140, 149 to 165

WiFi MIMO 2x2

WiFi antenna gain max. 5 dBi

Transmission power max. 2 W

Antenna type Passive Antenna

Mechanics

Dimensions 173 x 161 x 98 mm³ (L x W x H)

Protective hose -

Antenna cable 1500 mm (K)

Mobile radio connection 2x FAKRA socket Code D Bordeaux

WiFi radio connection 2x FAKRA socket Code K Curry

Weight 450 g

Temperature range -40 °C to +85 °C

Humidity 10 % to 90 % without condensate

Protection class IP68 (when installed)

Cable entry minimum Ø 24 mm

Special feature no electrically conductive ground surface necessary

Fastening UV-resistant assembly adhesive e.g. Sikaex, Dekalin (not included in the delivery)

WEEE No.: DE 50397397



Electronics

Mobile frequencies 698 MHz to 960 MHz, 1424 MHz to 2170 MHz, 2490 MHz to 2690 MHz, 3200 MHz to 3900 MHz

Cellular MIMO 4x4

Mobile antenna gain max. 5 dBi

WiFi frequencies 2300 MHz to 2490 MHz, 5.15 GHz to 5.825 GHz, 5.925 GHz up to 6.425 GHz

WiFi bands 1 to 14, 36 to 64, 100 to 140, 149 to 165

WiFi MIMO 2x2

WiFi antenna gain max. 5 dBi

Transmission power max. 2 W

Antenna type Passive Antenna

Mechanics

Dimensions 173 x 161 x 98 mm³ (L x W x H)

Protective hose 1500 mm (S)

Antenna cable 3000 mm (K)

Mobile radio connection **LTE:** 2x FAKRA socket Code D Bordeaux
5G diversity: 2x FAKRA socket Code A Black

WiFi radio connection 2x FAKRA socket Code K Curry

Weight 700 g

Temperature range -40 °C to +85 °C

Humidity 10 % to 90 % without condensate

Protection class IP68 (when installed)

Cable entry M20 / PG13.5

Special feature no electrically conductive ground surface necessary

Fastening UV-resistant assembly adhesive e.g. Sikaex, Dekalin (not included in the delivery)



Electronics

Mobile frequencies 698 MHz to 960 MHz, 1424 MHz to 2170 MHz, 2490 MHz to 2690 MHz, 3200 MHz to 3900 MHz

Cellular MIMO 4x4

Mobile antenna gain max. 5 dBi

WiFi frequencies 2300 MHz to 2490 MHz, 5.15 GHz to 5.825 GHz, 5.925 GHz up to 6.425 GHz

WiFi bands 1 to 14, 36 to 64, 100 to 140, 149 to 165

WiFi MIMO 2x2

WiFi antenna gain max. 5 dBi

Transmission power max. 2 W

Antenna type Passive Antenna

Mechanics

Dimensions 173 x 161 x 98 mm³ (L x W x H)

Protective hose -

Antenna cable 1500 mm (K)

Mobile radio connection **LTE:** 2x FAKRA socket Code D Bordeaux
5G diversity: 2x FAKRA socket Code A Black

WiFi radio connection 2x FAKRA socket Code K Curry

Weight 550 g

Temperature range - 40 °C to + 85 °C

Humidity 10 % to 90 % without condensate

Protection class IP68 (when installed)

Cable entry minimum Ø 24 mm

Special feature no electrically conductive ground surface necessary

Fastening UV-resistant assembly adhesive e.g. Sikaex, Dekalin (not included in the delivery)

Service

If you have any questions, please contact us at:
service@antretter-huber.com



More information can be found here:
www.antretter-huber.com/service

Stay in touch with us:



facebook.com/AntretterundHuber



instagram.com/antretterundhuber



youtube.com/@antretterhuber831

Thank you for choosing our product.
We hope you enjoy it.







Antretter & Huber GmbH
Irsham 55
94081 Fürstenzell
www.antretter-huber.com